

SHARE:

[Join Our Email List](#)

# LDH TODAY

August 30, 2023

[Subscribe to  
LDH Today](#)

[#TeamLDH Guidance  
and Resources](#)

[Behavioral Health  
Resources](#)



## Share Your News and Photos!

If you have a story, announcement or success story you or your program office would like to share, [let the Bureau of Media and Communications \(BMAC\) know!](#) We'd love to hear about your program updates, recognitions, shout-outs and important deadlines, and see your team member, event and work photos.

**The next LDH Today will be on September 13. Submit your news by 10 a.m. Thursday, September 7.** Limit items to no more than 200 words. Please attach images as a separate file to the email and include a brief description when submitting.



# HAPPY LABOR DAY

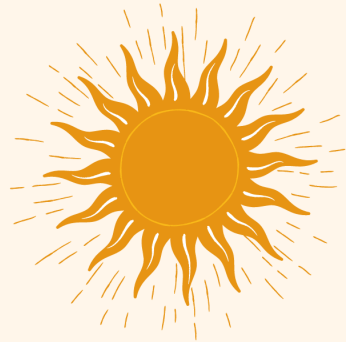
STATE OFFICES CLOSED SEPTEMBER 4

---

## LDH launches heat dashboard

The teams at the Bureau of Health Informatics and the Section of Environmental Epidemiology and Toxicology (SEET) have collaborated on a heat-related illness and deaths dashboard, launched Monday, that can be viewed at [ldh.la.gov/heat](https://ldh.la.gov/heat).

The dashboard will be updated on Tuesdays and will include the number of heat-related deaths and emergency department visits along with demographic information about those impacted by heat. There are also links to helpful resources and a fact sheet on heat-related illness.



## LDH HEAT DASHBOARD

Visit [ldh.la.gov](https://ldh.la.gov) every Tuesday for the latest data on heat-related illness and deaths in Louisiana

A big thank you to these teams for their quick work on an issue that has become a key focus of the Department's response during the Governor's declared state of emergency due to extreme heat.

---



# DONATE BLOOD

**Wednesday, September 6**

**10 a.m. - 1 p.m.**

Bloodmobile

St. Joseph Cathedral parking Lot



## Donate blood and help your team win the 'Battle of Departments'

Hey #TeamLDH, you're invited to join the "Battle of Departments," a blood drive competition where the department/section with the most completed blood donations will win a custom trophy!

LDH is partnering with Vitalant to host this blood drive on **Wednesday, September 6 from 10 a.m. to 1 p.m.** Blood donations will take place in the Vitalant Bloodmobile parked in the St. Joseph Cathedral's parking lot.

Complete your [health questionnaire](#) on the day of your donation by visiting [vitalant.org/health](https://vitalant.org/health). IDs are required to donate.

There are two ways to schedule your appointment:

- **Scan the QR code:** Schedule your appointment by scanning the QR code on the event flyer
- **Register online:** Visit [www.donors.vitalant.org](https://www.donors.vitalant.org) and use the code "**Departmentofhealth**" to view time slots and register.

All donors will receive a Vitalant Beanie and a \$5 Starbucks gift card.

For questions or issues scheduling your appointment, please email [Melissa Garcia](#) or [Breanna Paul](#).

This event is hosted by the Employee Engagement and Training Section (EET) and Legislative and Governmental Relations (LGR).

---

## LDH highlights Prostate Cancer Awareness Month

September is nationally recognized as National Prostate Cancer Awareness Month. Prostate cancer is the most common non-skin cancer in America and the **second leading cause of cancer death among men in Louisiana**. The prostate is a gland in the male reproductive system that produces fluid that makes up part of semen. Prostate cancer begins when cells in the prostate gland start to grow out of control.

### ***Who is at risk for prostate cancer?***

All men are at risk for prostate cancer, but it is more common in older men. It is also more likely to occur in men with a family history of prostate cancer and in men of African-American descent. For example, one in five Black men and one in three men with a family history will develop prostate cancer. Other risk factors include smoking, being overweight and not getting enough exercise. In the United States, one in eight men will be diagnosed with prostate cancer in his lifetime.

### ***What are the symptoms of prostate cancer?***

Prostate cancer may cause no signs or symptoms in its early stages. However, more advanced cancer may cause signs and symptoms such as:

- Trouble urinating or emptying the bladder completely
- Weak or interrupted flow of urine
- Urinating often, especially at night
- Pain or burning during urination
- Blood in the urine or semen
- Pain in the back, hips or pelvis that doesn't go away
- Erectile dysfunction or painful ejaculation

### ***Who should get screened?***

[The Centers for Disease Control and Prevention \(CDC\)](#) recommends men with high risk who are 45 or older speak with their doctors to make individual decisions regarding screening. The sooner prostate cancer is detected by screening, the higher chances are to address the diagnosis.

---

### ***Tackle your health: Knowing the playbook may help you make a crucial catch against prostate cancer***

Put on your favorite sports team jersey and join us for "Tailgate Talk," a prostate cancer lunch and learn, on **Thursday, September 7 at 1 p.m.** Register [here](#).

[Baton Rouge Clinic urologist Dr. Ross Cockrell](#) will share his playbook on prostate cancer, prevention, screening and what to do after a diagnosis. He will also discuss the importance of communication with your primary care physician and how to take charge of your health.



Prior to the start of the lunch and learn, registered participants who work in the Bienville Building can [complete this questionnaire](#) and pick up a tailgate grab-n-go snack box in the third-floor breakroom from **12:15 p.m. to 12:45 p.m.**

All participants will be entered into a drawing to win a gift card to either Dick's Sporting Goods, Bass Pro Shop or Amazon.



## LDH Today moving back to weekly publication schedule

Beginning on September 13, LDH Today will move back to a weekly publication schedule. As a reminder, we ask that submissions be emailed to [ldhtoday@la.gov](mailto:ldhtoday@la.gov) by the Thursday before the Wednesday publication.

Thank you for all your continued patience.

## Outreach events around Louisiana help families prepare for the return of school



### **Medicaid Region 3**

Medicaid Region 3 (South Central Louisiana) recently provided outreach items and supplies to more than 600 students at W.S. Lafargue Elementary School in Thibodaux and St. Charles Parish Head Start in Destrehan and Hahnville. Items included stress balls, frisbees, jump ropes, cups, pens and pencils.

They also handed out these items to 40 local children at the Moses Center in Thibodaux.

**Above:** Region 3 Medicaid Regional Administrator Kyle Maggio (left) and Medicaid analyst supervisor Jessica Waguespack (right) give supplies to W.S. Lafargue Elementary School Principal Norman Edmonds (center).



## OPH Region 3

Team members with the Region 3 office and parish health units (PHU) co-hosted and participated in several successful events around the region for students, faculty and parents.

Event attendees learned about infectious diseases, vaccinations, COVID-19, emergency preparedness, mental health, suicide prevention, hygiene, Community HealthWays, PHU services and navigating the Medicaid Unwind. Team members also handed out COVID-19 home test kits.

**Top right:** More than 150 people attended the Back to School Extravaganza hosted by the Lafourche Public Library in Raceland. The event was co-sponsored by Aetna along with 15 area vendors supporting healthy lifestyles.

**Below right:** LDH team members Amanda Melancon (left) and Stacey Martin (right) provided information and prizes to attendees of the Terrebonne Parish Head Start Community Partnership Day, a community event in Houma.



## OPH Region 7

Team members from the Caddo, DeSoto and Webster PHUs recently attended Galilee Baptist Church's annual Back-to-School Bash to provide more than 300 attendees with copies of their immunization records for school.

OPH Region 7 (Northwest Louisiana) Tuberculosis Control Program Manager Jamie Wooley (left) also attended the [\*\*Resource Access Service Association's\*\*](#) (RASA) Hispanic Health Fair for local Hispanic community members. She provided attendees with Spanish-language materials on tuberculosis, vaccines, WIC, reproductive health and STIs.

During both events, team members gave out information on the [\*\*updated Louisiana school vaccination schedule\*\*](#), the [\*\*vaccination schedule for adults\*\*](#), the [\*\*988 Suicide and Crisis Lifeline\*\*](#), heat safety information and services available at the PHUs. Children received backpacks with COVID-19 test kits,

supplies, a safe summer informational puzzle and a coloring book.

**Above top:** Regional Nurse Manager Yolanda Chandler, Webster PHU Administrative Coordinator Kristen Campbell and DeSoto PHU Administrative Coordinator Jerrica Rochelle provide attendees with copies of their immunization records.

**Above bottom:** Tuberculosis Control Program Manager Jamie Wooley prepares to meet community members where they are and provide health information in their preferred language.

---

## ***OPH Region 9***

Region 9 (Northshore) OPH Health Disparities Strategist Angela Shuckhart and team members educated community members and handed out back-to-school kits at several recent events, marking the beginning of the 2023-2024 academic year for the Northshore parishes.

**Right:** Registered Nurse (RN) Renarda Brice, emergency preparedness planner Melissa Scott, RN Toshia Washington and health disparities strategist Angela Shuckhart greet the back-to-school crowd in Bogalusa.



**Above left:** Region 9 hospital nurse coordinator Julia White snuggles with Louie the Lab, the ambassador for the St. Tammany Coroner's Office.



**Above right:** Region 9 OPH health disparities strategist Angela Shuckhart demonstrates how to spin the prize wheel to a young man who stopped by for health trivia, fresh fruit and a back-to-school kit.

---

## ***Bureau of Community Preparedness***

The Bureau of Community Preparedness (BCP) COVID-19 Health Disparities team recently provided COVID-19 education and resources at back-to-school events held in Northern Louisiana. This team consisted of social workers, strategists and community health workers from Office of Public Health (OPH) Regions 4 (Acadiana), 5 (Southwest

Louisiana), 6 (Central Louisiana), and 7 and 8 (North Louisiana).

Although the public health emergency has ended, the Health Disparities team continues to participate in local events to reduce health disparities related to COVID-19 and provide much-needed support to directly address health inequity in high-risk and underserved communities.

**Top right:** Statewide Social Worker Wilbert Green, Region 8 COVID-19 Coordinator Jeanette Glover, Health Disparities Grant Manager Antigone Ruth, Region 8 Social Worker Shirah Tolliver, Region 6 Strategist DeAdrian Ficklin, Statewide Strategist Stephen King, Region 8 Strategist Toshia Laing, Region 7 Community Health Worker Tenille Jenkins and Region 6 Social Worker Allison Dean attend a back-to-school event at Abundant Life Church in Natchitoches.



**Bottom right:** Statewide Strategist Stephen King, Region 5 Strategist Bridget Bossert, Health Disparities Grant Manager Antigone Ruth, Region 4 Strategist Juleah Joseph and Statewide Social Worker Wilbert Green attend a back-to-school event at Founders Park in Jennings.

---

## Well-Ahead hosts WISEWOMAN Wellness Expo



Well-Ahead Louisiana's [WISEWOMAN Program](#) recently hosted the WISEWOMAN Wellness Expo in Hammond on Saturday, August 19 at the Tangipahoa PHU, and in Baton Rouge on August 26 at the BREC Womack Ballroom to provide a total

network of support for women wellness.

The events provided no-cost cardiovascular health screenings and early detection cancer screenings to women between the ages of 40 and 64 to increase access to chronic disease preventive services and reduce health disparities. Attendees also had the opportunity to get mammogram services and donate blood to the onsite mobile clinics.

More than 20 vendors and community partners came together to help make the expos fun and educational experiences, complete with healthy food demonstrations, wellness checks and exercise and stretch sessions.

---



# OPH Region 7 provides communities with Narcan and opioid information

In preparation for school, OPH Region 7 Opioid Prevention Outreach Coordinator (OPOC) Yolanda Duckworth recently trained regional law enforcement officers, school nurses and school resource officers (SRO) on Narcan administration and the dangers of opioids.

She also met with community members in Bossier, Desoto, Natchitoches and Sabine parishes to provide information on the opioid crisis in Louisiana and the emergence of fentanyl, while also demonstrating how to administer Narcan to an individual who may be experiencing an opioid overdose.

**Above:** Region 7 OPOC Yolanda Duckworth (left in red) meets with Bossier Parish school district nurses.



---

## Louisiana Charitable Campaign to begin Sept. 5

This fall marks the 10th annual [Louisiana State Combined Charitable Campaign](#) (LA SCCC), a single workplace campaign for state employees where they are given the opportunity to designate their contributions to qualified health and human service non-profits of their choice.

State employees paid through the LaGov HCM payroll system will have the opportunity to learn about the LA SCCC charities, choose which ones they want to help, and then fill out a pledge form indicating how much they wish to donate. Employees have the option to donate through the convenience of payroll deduction or make a one-time gift via cash, check, credit card, or through payroll deduction.

The campaign will begin **September 5**, with all pledge forms and online pledge donations due by **October 31**. All special event/fundraiser revenue will be due by December 1. Each department/agency has an appointed campaign coordinator(s) who is responsible for educating employees about the LA SCCC and giving them the opportunity to contribute.

More information will be posted in upcoming issues of LDH Today.

---

REGISTRATION NOW OPEN

2023

HEALTH  
SUMMIT

ADVANCING POPULATION HEALTH, EQUITY, AND WELL-BEING

CONTINUING OUR PROGRESS TOWARD LA40BY2030 WITH A FOCUS ON WOMEN AND CHILDREN

OCTOBER 3-4, 2023 CONVENES AT 1:00 PM

LATE REGISTRATION STARTS ON SEPTEMBER 21ST

[2023HEALTHSUMMIT.EVENTBRITE.COM](https://2023HEALTHSUMMIT.EVENTBRITE.COM)

PARTNERSHIP OPPORTUNITIES AVAILABLE. EMAIL  
[INFO@LAHEALTHEQUITY.ORG](mailto:INFO@LAHEALTHEQUITY.ORG) FOR MORE INFORMATION



## Registration is open for the 2023 Health Summit: Advancing Population Health, Equity, & Well-Being

LDH is partnering with the [Louisiana Center for Health Equity](#) (LCHE) and [Pennington Biomedical Research Center](#) (PBRC) to host the eighth annual statewide summit on **Tuesday, October 3 and Wednesday, October 4** at PBRC in Baton Rouge.

Consistent with one of [LDH's four State Health Improvement Plan priorities](#), this year's summit will embrace population health by focusing on women and children to continue the momentum toward improving health equity in Louisiana.

Additionally, the summit aims to expand collaboration, increase engagement and identify policy solutions to improve health outcomes and quality of life for Louisiana's children and families. The goal of the summit is to continue progress toward LCHE's bold vision of **LA40by2030**.

The keynote speaker will be Dr. Camara Phyllis Jones, MPH, PhD. Known for her allegories on race and racism, which enable inclusive dialogue on critical public health issues, Dr. Jones is a family physician, epidemiologist and past president of the [American Public Health Association](#) (APHA).

Registration is \$100. To register, click [here](#). For additional information, please email [info@lahealthequity.org](mailto:info@lahealthequity.org).

---

# The Design Spot



## Hone your professional communications!

Hey #TeamLDH,

Everyone has room to improve when it comes to professional communication. We hope this monthly feature will help build your knowledge and understanding of LDH style, whether you're a new communicator or a seasoned professional.

You'll find tips on topics like graphic design, taking good photos, the difference between a flyer and a social media graphic, proper use of LDH logos and more.

When in doubt, consult:

- LDH Brand Guide: [ldh.la.gov/LDHBrandGuide](http://ldh.la.gov/LDHBrandGuide)
- LDH Style Guide: [ldh.la.gov/LDHStyleGuide](http://ldh.la.gov/LDHStyleGuide)
- LDH Bureau of Media and Communications: [ldhtoday@la.gov](mailto:ldhtoday@la.gov)



## Design tips: Less is more

When it comes to designs, **less is often more**. The goal of any design is to communicate effectively with the viewer. When messages are clear and concise, viewers often pay more attention.

Complicated designs often suffocate and overwhelm the reader, especially if the design is cluttered and requires their eyes to dart all over the place. If a reader becomes visually exhausted looking at a design, they are prone to moving away quickly. Cluttered designs also fail to give the viewer a main aspect to remember.

Here are a few ways to ensure that your design will be legible, memorable and helpful:

- **Use a limited number of fonts**- three or fewer. This will ensure legibility and consistency.
- **Limit the amount of colors or patterns**. Find a color palette and stick to it.
- **Remove unnecessary elements** that can distract the viewer.
- **Avoid generic stock images**, as they often appear unprofessional to many readers.
- **Keep sentences as short and concise** as possible; don't be redundant.

## Employee Engagement and Training Section (EET)

# NATIONAL RICE KRISPIES TREAT DAY

September 18

ENJOY A RICE KRISPIES  
TREAT PROVIDED BY EET!

## REGION 1: 11 A.M.

1450 Poydras St., New Orleans  
18th-floor Conference Room

## REGION 2: 11 A.M.

628 North Fourth St., Baton Rouge  
Third-floor breakroom

## REGION 3: 11 A.M.

1222 Tiger Dr., Thibodaux  
Kitchen/breakroom

## REGION 4: 2 P.M.

117 Production Dr., Lafayette  
Kitchen

## REGION 5: 8 A.M.

2827 4th Ave., Suite 100, Lake Charles  
Breakroom

## REGION 6: 8 A.M.

3600 Jackson St. # 200, Alexandria  
5604-A Coliseum Blvd., Alexandria  
657 Government St., Marksville  
Employee Breakroom

## REGION 7: NOON

3020 Knight St., Shreveport  
Downstairs breakroom

## REGION 8: NOON

24 Accent Dr., Monroe  
Suite 119 Breakroom

## REGION 9: 8 A.M.

45615 University Park Ave., Hammond  
Kitchen



## Food Truck Fests coming to Regions 2, 4, 5, 6 and 8!

Region 4 (pictured above enjoying the last fest) will have a Food Truck Fest on **Wednesday, September 20 from 11 a.m. to 1 p.m.** in the Brandywine Building parking lot (825 Kaliste Saloom Road, Lafayette).

Regions 2, 5, 6 and 8 will have their Food Truck Fests on **Monday, September 25 from 11 a.m. to 1 p.m.** More information on participating vendors and addresses will be published in the next LDH Today.

## Check out the rest of EET's September events!

Want a flyer with clickable links? Download one [here](#)!

If you would like to help facilitate activities in your region, please reach out to Breanna Paul at [LDH-EEThelpdesk@LA.GOV](mailto:LDH-EEThelpdesk@LA.GOV).





# LDH EMPLOYEE ENGAGEMENT EVENTS SEPTEMBER 2023

Wear light blue every Wednesday in support of Prostate Cancer

**SEPTEMBER  
6**

## **MONDAY.COM LUNCH & LEARN: PART TWO**

Join this Zoom for a Monday.com refresher from 1 p.m. to 2 p.m. Register at [bit.ly/MondayPart2](https://bit.ly/MondayPart2)

## **BLOOD DRIVE**

Save lives by donating blood from 10 a.m. to 1 p.m. in the Vitalant Bloodmobile parked in the St. Joseph Cathedral's parking lot. Please bring identification. Walk-ins welcome. Register at [bit.ly/VitalantBloodDonation](https://bit.ly/VitalantBloodDonation)

**SEPTEMBER  
7**

## **PROSTATE CANCER LUNCH & LEARN**

Join Baton Rouge Clinic urologist Dr. Ross Cockrell as he discusses prostate cancer at 1 p.m. Register at [bit.ly/prostatecancerlunchandlearn](https://bit.ly/prostatecancerlunchandlearn)

**SEPTEMBER  
12, 20, 27**

## **NACHO SALE!**

Come to Bienville's third-floor breakroom from 11 a.m. to noon for some nacho chips with cheese and/or peppers. Nachos will be \$3 each, cash only. Proceeds fund EET events.

**SEPTEMBER  
13, 20, 27**

## **SNOWBALL SALE**

Stop by Bienville's third-floor breakroom from 2 p.m. to 3 p.m. for a snowball for \$2 each, cash only. Proceeds fund EET events.

**SEPTEMBER  
14**

## **SUICIDE PREVENTION LUNCH & LEARN**

Learn about suicide prevention at 1 p.m. Register at [bit.ly/SuicidePreventionLunchandLearn](https://bit.ly/SuicidePreventionLunchandLearn)

**SEPTEMBER  
18**

## **NATIONAL RICE KRISPIES TREAT DAY**

Celebrate National Rice Krispies Treat Day with free rice krispies treats in every region! Check out LDH Today for more details or click [here](#) to view the flyer.

**SEPTEMBER  
20**

## **SUPPORT YOUR ALMA MATER DAY**

Wear paraphernalia from your college alma mater. Find your fellow graduates and send group pics to [LDH-EEThelpdesk@la.gov](mailto:LDH-EEThelpdesk@la.gov)

## **FOOD TRUCK FEST – REGION 4**

Join our food truck fest in the Brandywine Building parking lot from 11 a.m. to 1 p.m. (825 Kaliste Saloom Road, Lafayette)

**SEPTEMBER  
25**

## **FOOD TRUCK FEST – REGIONS 2, 5, 6 & 8**

Join our food truck fest in Regions 2, 5, 6 and 8! Check out LDH Today for more details; vendor information is forthcoming.

**Don't forget: You can wear jeans every day for just \$10!**

Questions? Email [LDH-EEThelpdesk@la.gov](mailto:LDH-EEThelpdesk@la.gov)





# #TeamLDH Recognitions and Accomplishments

**We want to recognize you!** Please send BMAC information about any awards or special recognitions you have recently received so we can feature you in LDH Today!

Please limit submissions to **125 words or less** and include your title and department or program office. Pictures should be sent as an attachment and labeled with your first and last name. Email [ldhtoday@la.gov](mailto:ldhtoday@la.gov).

## Azizi Chaisson is Medicaid EFO-MSD's Employee of the Year

The Medicaid Eligibility Field Operations-Member Services Division (EFO-MSD) has named Azizi Chaisson as its Employee of the Year.

Azizi is a seasoned phone agent with the Contact Support Unit who delivers great customer service by treating members with a high level of respect, never allowing her emotions to get the best of her, showing empathy toward member problems and going the extra mile to show members that LDH cares. She received 100% quality scores for the year.



In the workplace, Azizi is receptive to feedback and always looks for ways to become better. She also demonstrates the importance of team work by maintaining a positive and helpful attitude while training new team members and explaining to them the "why" behind certain job aspects.

## Human Resources (HR) News and Updates

### Starmount Life, Transamerica Life to have rate increases

Starmount Life (Dental) and Transamerica Life (Cancer) will implement rate increases effective January 1, 2024. Click [here](#) for more information.

If you have any questions about the rate changes, please contact one of the following administrative coordinators:

- **Starmount Life:** Rosalyn Duty, 888-729-5433
- **Transamerica Life:** Kristine DePrefontaine, 727-557-2842

## PES evaluations due by Friday, August 31

**All PES evaluations must be conducted by Friday, August 31. No PES evaluations should be conducted after August 31 as they will be considered untimely and will result in an "Un-rated" rating.**

PES can be conducted electronically via DocuSign or certified digital signature. Adobe Fill & Sign and other non-certified electronic means are not acceptable. DocuSign signatures are NOT a substitute for 1:1 or face-to-face meetings.

Hard copies of all PES forms should be delivered or mailed to the main HR office in the Bienville Building for processing. LDH facilities should submit PES to their respective HR offices.

Bienville mailing address:  
P.O. Box 4818  
Baton Rouge, LA 70821

---

## On the calendar in September...

### *Monthlong observances*

- Blood Cancer Awareness Month
- Healthy Aging Month
- National Childhood Obesity Awareness Month
- National Preparedness Month
- National Recovery Month
- National Sickle Cell Month
- National Screening Awareness Month
- Ovarian Cancer Awareness Month
- Prostate Cancer Awareness Month
- Sexual Health Awareness Month
- National Traumatic Brain Injury Month
- National Food Safety Month
- Leukemia and Lymphoma Awareness Month
- Suicide Prevention Month
- Childhood Cancer Month
- Uterine Cancer Awareness Month
- Thyroid Cancer Awareness Month
- Atrial Fibrillation Awareness Month
- Newborn Screening Awareness Month
- Pain Awareness Month
- National Cholesterol Education Month
- Children's Eye Health and Safety Month
- Duchenne Muscular Dystrophy Awareness
- National Spinal Cord Awareness Month



### *Weeklong observances*

- **September 10-16:** National Suicide Prevention Week; Healthcare Environmental Services Week
- **September 17-23:** Child Passenger Safety Week

- **September 18-22:** Malnutrition Awareness Week

### **Observance days**

- **September 4:** Labor Day — **STATE OFFICES CLOSED**
  - **September 7:** World Field Epidemiologist Day
  - **September 8:** World Physical Therapy Day
  - **September 9:** Fetal Alcohol Syndrome Awareness Day
  - **September 10:** World Suicide Prevention Day
  - **September 13:** National Celiac Disease Awareness Day
  - **September 15:** World Lymphoma Awareness Day
  - **September 18:** National HIV/AIDS and Aging Awareness Day
  - **September 21:** World Alzheimer's Day
  - **September 22:** Falls Prevention Awareness Day
  - **September 26:** World Contraception Day
  - **September 27:** National Women's Health and Fitness Day
  - **September 29:** World Heart Day
  - **September 30:** National Family Health and Fitness Day
- 

## **LDH in the news**

- [Healthwise: Mental health expert warns against deadly consequences of binge drinking](#) | KNOE
- [LDH urges Louisianans to take air quality precautions due to wildfires](#) | BR Proud
- [Louisiana still recovering two years after Hurricane Ida made landfall](#) | BR Proud
- [Lafayette Parish public school buses don't have A/C. Here's how to help keep students cool](#) | The Advocate
- [Dillard University orders masking as COVID cases rise in Louisiana](#) | Nola.com
- [Hey Louisiana, Do You Know the Signs of Heat Exhaustion?](#) | K945
- [COVID Cases are increasing across the state](#) | KNOE
- [Madison Preparatory High taking safety precautions as football season nears](#) | BR Proud
- [Commissioner Foster Campbell explains why utility companies cannot turn off customers' electricity during extreme heat](#) | KSLA
- [FEMA grant approved as wildfires keep burning in Louisiana](#) | KLFY
- [Groups hand out cooling supplies due to blistering heat temperatures](#) | WAFB
- [Louisiana Department of Health reports 25 heat-related deaths since June then previously reported in August](#) | Louisiana Radio Network
- [Louisiana leads nation with increase of COVID-19 hospitalization rates](#) | BR Proud
- [Celebrating 70 years: West Calcasieu Cameron Hospital opened its doors in 1953](#) | American Press
- [Louisiana public service commissioner wants to pause energy shutoffs due to extreme heat](#) | BR Proud
- [HVAC systems 'being pushed to the limit' to keep kids cool in Iberville Parish Schools](#) | BR Proud
- [Children account for one-third of Louisiana's Medicaid roll removals](#) | KTBS

The mission of the Louisiana Department of Health is to protect and promote health and to ensure access to medical, preventive and rehabilitative services for all citizens of the State of Louisiana.

LDH is committed to the highest standards of conducting its affairs in full compliance with state and federal laws, regulations and policies. To report fraud, or other violations of federal and state laws and regulations or violations of LDH policies, send an email to [LDHreportfraud@la.gov](mailto:LDHreportfraud@la.gov) or call the Internal Audit Unit at (225) 342-7498. When making a report, particularly if you choose to remain anonymous, please provide as much information about the alleged activity as possible. Try to answer the questions of Who, What, When, Where and How.

**LOUISIANA DEPARTMENT OF HEALTH** | [ldh.la.gov](https://ldh.la.gov)

